

Multi-Jet Water Meter

Arad



On the Multi-Jet water meters (Type M - MS, ½" - 2") with screw thread fitting, the water passes by the paddle wheel via several inlets (multi-jets). The paddle wheel is symmetrically loaded so less wearing occurs.

Since 2020, the larger sizes Multi-Jet are only available in the MS series (Multi-Jet Silver). This water meter is more widely certified (including MID2014), has a modified design and, moreover, no bolts on the brass housing. This is in contrast to the larger sizes in the M-series (for 2020).

APPLICATION

Irrigation and drainage systems and industrial applications

CHARACTERISTICS

- ✓ Magnetic and driven sealed counters
- ✓ Brass couplers (supplied)
- ✓ Register output by means of (magnetic) Reed contact (EV) or photo-diode pointer (EF-P)
- ✓ Test results in the cover, calibration certificate on request

TECHNICAL DATA

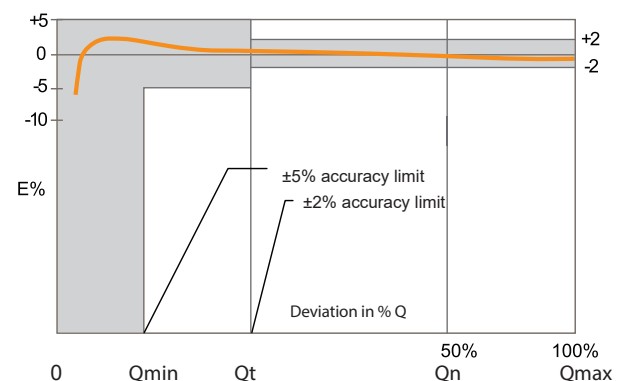
Accuracy	: +/- 2% between Q_t and Q_{max}
	: +/- 5% between Q_{min} and Q_t
Connection	: ½" - 2" (male thread)*
Maximum pressure	: 10 bar
Maximum capacity	: 1.5 - 15 m ³ /h
Maximum temperature	: 50 °C
Head loss	: 1 bar (M), 0.65 bar (MS) at max. capacity
Material	: durably epoxy-coated brass
Thread	: BSP (coupling)
Certification	: MID*, CE, ISO 4064 (2005), AWWA C 708, SI 63
Option	: MH: Multi-jet for hot water applications up to 90°C

* with the exception of M15

Performance and accuracy (according to MID/2014/32/EU - ISO 4064: 2014)

Type		M15**	M20	M25/7	M30	MS40	MS50
	inch*	½"	¾"	1"	1¼"	1½"	2"
Minimum capacity Q_{min}	l/h	30	50	70	120	100	320
Transitional capacity Q_t	l/h	120	200	280	480	160	512
Nominal capacity Q_n	m ³ /h	1,5	2,5	4,5	6	10	16
Maximum capacity Q_{max}	m ³ /h	3	5	7	12	12,5	20

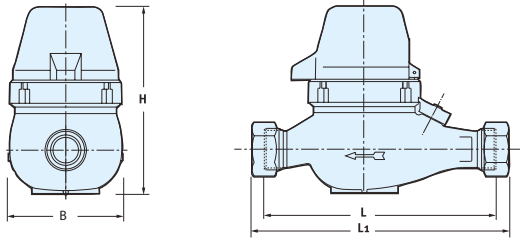
* Connection dimensions are for brass hose barbs. ** no MID-certification available



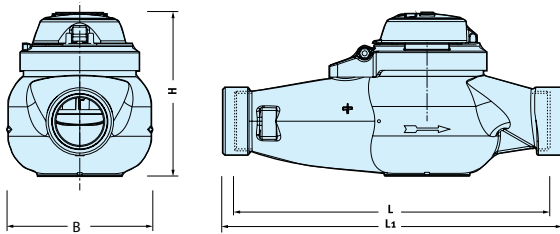
Technical drawings and dimensions*

Type	mm inch	M15 ½"	M20 ¾"	M25/7 1"	M30 1¼"	MS40 1½"	MS50 2"
L - Length	mm	190	190	260	260	300	300
L1 - Length without couplings	mm	285	285	375	375	435	460
B - Width	mm	95	95	105	105	125	160
H - Height	mm	108	108	108	108	140	190
Weight with couplings	kg	1,9	2	2,8	2,8	5,1	9,4
Connection with couplings	inch	¾"	1"	1 ¼"	1½"	2"	2¼"

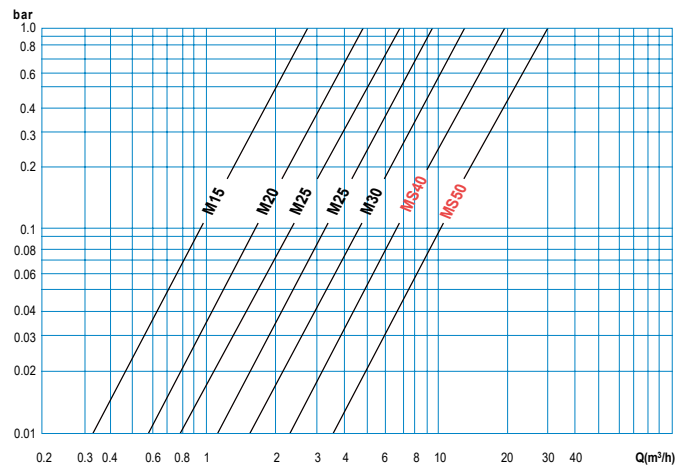
M15 to M30



MS40 and MS50



Head loss (bar)



Register output

Size		Type of register output and units of measure					
		1 pulse / ... liter			1 pulse / ... m³		
		1	10	100	1	10	
M15	½"	EV	EV	EV			
M20	¾"	EV	EV	EV			
M25/7	1"	EV	EV	EV			
M30	1¼"	EV	EV	EV	EV		
MS40	1½"	EF-P	EV	EV	EV		
MS50	2"		EF-P	EV	EV	EV	

EV = Reed switch EF-P = photodiode pointer

INSTALLATION & MAINTENANCE

Installation

- ✓ Read the enclosed operating instructions and installation instructions before installation.
- ✓ A length of straight pipe upstream and downstream of the meter is not necessary. The Multi-Jet water meter is unaffected by turbulence in the pipes.
- ✓ The meter should be installed in the horizontal position with the counter facing upwards.
- ✓ Piping should be flushed before installation.